

## Case Reports

# The Longitudinal Neurophysiological Adaptation of a Division I Female Lacrosse Player Following Anterior Cruciate Rupture and Repair: A Case Report

Robert Mangine<sup>1,2a</sup>, Jim Tersak<sup>3</sup>, Thomas Palmer<sup>4</sup>, Audrey Hill-Lindsay<sup>5</sup>, Bolton Patton<sup>6</sup>, Marsha Eifert-Mangine<sup>7,8</sup>, Bradley Jacobs<sup>9,10</sup>, Angelo J Colosimo<sup>11</sup>

<sup>1</sup> Director of Residency Education, NovaCare Rehabilitation, <sup>2</sup> Associate Director Sports Medicine, University of Cincinnati, <sup>3</sup> Sports Medicine Director of Rehabilitation, NovaCare Rehabilitation, <sup>4</sup> Exercise Science and Integrative Health, Mount St. Joseph University, <sup>5</sup> CLR Neurosthenics Inc, <sup>6</sup> Physical Therapy, University of Alabama at Birmingham, <sup>7</sup> Physical Therapy, Mount St. Joseph University, <sup>8</sup> NovaCare Rehabilitation, <sup>9</sup> Neuro-Visual Performance Institute, <sup>10</sup> Clinical Research Associate, University of Cincinnati, <sup>11</sup> Orthopedics, University of Cincinnati

Keywords: Neurophysiological adaptation, ACL Rehabilitation, Hemispheric asymmetries, Brain Mapping

<https://doi.org/10.26603/001c.73179>

---

## International Journal of Sports Physical Therapy

Vol. 18, Issue 2, 2023

---

### Background

Neurophysiological adaptation following anterior cruciate ligament (ACL) rupture and repair (ACLR) is critical in establishing neural pathways during the rehabilitation process. However, there is limited objective measures available to assess neurological and physiological markers of rehabilitation.

### Purpose

To investigate the innovative use of quantitative electroencephalography (qEEG) to monitor the longitudinal change in brain and central nervous systems activity while measuring musculoskeletal function during an anterior cruciate ligament repair rehabilitation.

### Case Description

A 19 year-old, right-handed, Division I NCAA female lacrosse midfielder suffered an anterior cruciate ligament rupture, with a tear to the posterior horn of the lateral meniscus of the right knee. Arthroscopic reconstruction utilizing a hamstring autograft and a 5% lateral meniscectomy was performed. An evidence-based ACLR rehabilitation protocol was implemented while using qEEG.

### Outcomes

Central nervous system, brain performance and musculoskeletal functional biomarkers were monitored longitudinally at three separate time points following anterior cruciate injury: twenty-four hours post ACL rupture, one month and 10 months following ACLR surgery. Biological markers of stress, recovery, brain workload, attention and physiological arousal levels yielded elevated stress determinants in the acute stages of injury and were accompanied with noted brain alterations. Brain and musculoskeletal dysfunction longitudinally reveal a neurophysiological acute compensation and recovering accommodations from time point one to three. Biological responses to stress, brain workload, arousal, attention and brain connectivity all improved over time.

### Discussion

The neurophysiological responses following acute ACL rupture demonstrates significant dysfunction and asymmetries neurocognitively and physiologically. Initial qEEG assessments revealed hypoconnectivity and brain state dysregulation. Progressive

---

<sup>a</sup> Corresponding Author:  
[manginre@ucmail.uc.edu](mailto:manginre@ucmail.uc.edu)

enhanced brain efficiency and functional task progressions associated with ACLR rehabilitation had notable simultaneous improvements. There may be a role for monitoring CNS/brain state throughout rehabilitation and return to play. Future studies should investigate the use of qEEG and neurophysiological properties in tandem during the rehabilitation progression and return to play.

## BACKGROUND AND PURPOSE

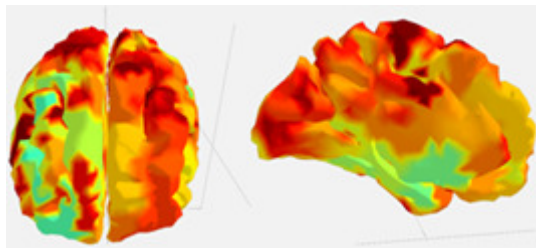
Injury to the anterior cruciate ligament (ACL) causes an immediate functional disparity to knee joint proprioception and the central and peripheral nervous systems. The neurological and physical alteration in joint mechanics warrants targeted interventions to regain functional performance.<sup>1-3</sup> Clinicians rely on progressive physical and neurological best practice intervention techniques to advance and guide rehabilitation and functional performance that leads to return to play sport parameters.<sup>3,4</sup> After injury or surgery clinicians are presented with the challenge to improve or correct mechanical dysfunctions including bilateral and/or ipsilateral asymmetries in balance, strength, coordination, and reacquisition of skills. Recent data indicates the changes that occur in musculoskeletal or physical performance during the rehabilitation process may be ill-proportioned to the improvements noted by the central and peripheral neurological systems following ACL rupture and repair.<sup>1,3</sup>

Immediately post-injury there are drastic changes to the both afferent (sensory) and efferent (motor) components of the peripheral nervous system which results in disrupted proprioceptive and motor function.<sup>1,3</sup> Activity at the brain and central nervous system (CNS) are therefore impacted by deficits in the neurophysiological somatosensory, motor excitability, and neural connective pathways throughout the body. The ligament rupture results in an altered feedback loop and changes of CNS processing of somatosensory information and concomitant alterations in motor responses.<sup>1,3</sup> Patients struggle to accurately maintain kinesthetic awareness, joint position awareness, the accuracy of the velocity of movements, and muscle forces necessary to function appropriately.<sup>3</sup> As a result, recent literature supports the use of treatment protocols that target somatosensory processing in the CNS in tandem with the management of impairments of pain, swelling, joint instability, and motor dysfunction.<sup>1,5</sup> The impaired feedback from ligament rupture results in advanced stages of disaffirmations and degradative neuroplastic modifications that result in insufficient efferent motor responses, and lead to functional limitations related to lack of body/limb coordination, postural control issues, and gait deviations.<sup>3,4,6</sup> For these reasons, researchers and clinicians attempt to target neural adaptation of both the peripheral and central nervous systems.<sup>3</sup> Neural adaptation following a significant alteration in afferent activity is well documented in the literature for joint replacement where numerous afferents are lost and other systems adapt to provide proprioception-like afferents.<sup>3,4</sup> While acute neural changes have been monitored in the brain during functional activities, there is very little empirical real-time evidence of central/brain neural modifications sequentially throughout the progressions of a post-

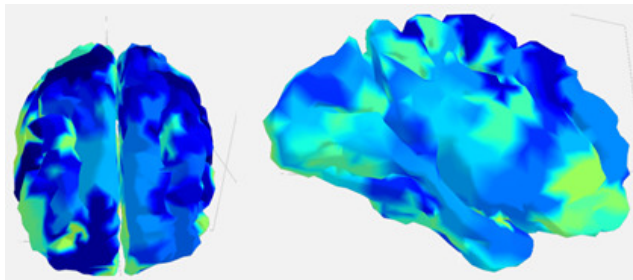
ACL repair/rehabilitation program. Thus, monitoring brain and central nervous system performance throughout a rehabilitation program may provide objective metrics to improve the neuromuscular training and neurophysiological development needed during rehabilitation following an injury, such as a ruptured ACL.<sup>4,5</sup>

Quantitative electroencephalography (qEEG), commonly referred to as "Brain Mapping" is the utilization of a digitized signal to analyze changes in brain function and performance. Measuring feedback loops between sensorimotor stimuli and functional tasks allows clinicians to measure cortical electrical brain wave activity. These measures can be used to evaluate a variety of conditions thought to be rooted to the brain, such as, post-traumatic stress disorder (PTSD), attention disorders, autism, epilepsy, seizure disorders, dementia, headaches, traumatic brain injuries, sleep disorders and learning disorders.<sup>4,7,8</sup> qEEG applies sophisticated mathematical and statistical analysis to the brain wave patterns and compares these observations to an universal database compiled of numerous healthy controls representing a variety of ages and genders.<sup>7</sup> The qEEG system used in this study has added technological advances that allow for dynamic activities to be performed during the qEEG data collection, resulting in a more profound assessment of qEEG and neurophysiological metrics as part of a rehabilitation program for an ACL rupture. Such measures display real-time brain electrical activity that occurs during physical activities. The Cognionics (CGX) Quick- 20r v2, 21 channel state of the art dry EEG headset (CGX EEG) from CLR Neurosthenics, Inc (Manhattan Beach, CA), with LED impedance indicators is used to collect continuous electrical signals from the brain that measure the magnitude and timing of cortical activity across 19 active channels (with 2 reference channels) relative to a stimulus or a motor task.<sup>9</sup> Cortical activity can be evaluated in response to a stimulus or functional task associated with the specific action.<sup>8</sup>

A well-functioning and active brain is classified as being in a regulated ready state with efficient brain connectivity as indicated by the red/orange highlights on a qEEG brain image.<sup>7,9</sup> Two brain maps are presented in Figures [1a](#) and [1b](#). [Figure 1a](#) represents a well-regulated state with little inhibitory drive which indicates efficient brain connections.<sup>7</sup> [Figure 1b](#) represents an inhibited neurophysiological state indicating poor efficiency of brain connectivity. The image in [Figure 1b](#) was obtained within 24 hours of knee post-injury. The blue tints seen in [Figure 1b](#) are indicative of a dysregulated and poor electrical active brain state. The type and strength of the electrical impulses or brain waves can be analyzed to determine how different parts of the brain function and communicate during a given task. For example, different EEG signals: delta (0.5–4 Hz), theta (4–7 Hz), and alpha (8–12 Hz) waves have multifaceted cortical sensory integrations used to promote mo-



**Figure 1a. Regulated Brain State**



**Figure 1b. Dysregulated Brain State**

tor activity that can reflect a motor and/or sensory activity period.<sup>10</sup> Memory tasks are associated strictly with theta and alpha waves typically involved with inhibition or deactivation of sensorimotor activities.<sup>8,10</sup> Evaluating the strength in electrical activity and band frequency of the brain waves throughout the cortex can quantitatively reflect the activity associated with a physical task.<sup>10</sup>

There are limited data identifying the cortical changes that occur throughout the linear progression of an ACLR rehabilitation program. Documenting the electrophysiological changes and accommodations at the brain and/or central nervous system level while progressing cognitive and physiological motor tasks used post-ACL injury or surgery may be valuable in developing more precise exercise progressions and return-to-play decisions. The purpose of this case report was to investigate the innovative use of qEEG and neurophysiological metrics to monitor the longitudinal and simultaneous change in brain and central nervous systems activity while measuring musculoskeletal function during an anterior cruciate ligament repair rehabilitation.

## CASE DESCRIPTION

### SUBJECT DEMOGRAPHICS

A 19-year-old, right-handed, Division I NCAA female lacrosse midfielder with 10 years of playing experience suffered a full thickness mid-substance anterior cruciate ligament rupture and a vertical posterior horn tear of the lateral meniscus near the intercondylar notch of the right knee. Clinical evaluation revealed moderate capsular swelling and a dysfunctional limb with pain during gait. Joint laxity following a Lachman's anterior drawer, pivot shift, valgus, and varus stability tests revealed excessive anterior tibial translation and a grade 1 MCL and LCL sprain. The injury occurred on 01/24/2022, and findings were con-

firmed the same day via MRI. An arthroscopy with anterior cruciate ligament reconstruction using hamstring tendon autograft and a 5% lateral meniscectomy was performed on 01/28/2022. The subject volunteered to take part in the case study and signed an informed consent regarding patient confidentiality and the protection offered by the U.S. Health Insurance Portability and Accountability Act (HIPAA). This project received no outside funding and the research was completed by the University of Cincinnati Sport Science Research Team.

During the course of the rehabilitation program, the patient's central nervous system, brain performance and musculoskeletal function were monitored longitudinally at three separate time points: twenty-four hours post ACL rupture, one month following ACLR surgery and ten months following ACLR surgery. Brain wave activity was observed using a CGX EEG head set at each time point. Congruently, the athlete participated in a contemporary evidence-based ACL rehabilitation protocol throughout all time points as outlined in Appendix A: Rehabilitation Summary Outline.<sup>11,12</sup> The expected limitations in functional mobility early in the rehabilitation progression restricted some physical testing during the early testing dates; however, normal rehabilitative functional parameters were implemented to assure return to play status over time.

### EXPLANATION OF OUTCOME MEASURES

Brain activity-dependent variables were measured using the CGX EEG head set. Cognitive workload metric, cognitive attention metric, sensorimotor rhythm (SMR) asymmetry, galvanic skin response (GSR), and three-dimensional cortex connectivity were derived to account for the central nervous system and brain precision and efficiency.<sup>13</sup> Cognitive workload metric represents the depletion of mental resources of the brain due to higher levels of cognitive or sensory demands placed on the brain.<sup>14</sup> GSR measures sympathetic conductance and electrical activity via a skin electrode which offers insight into the emotional state, or arousal, of a subject under specific experimental conditions. CNS arousal is typically directed by the thalamus with an emphasis on processing sensory inputs from the vision and hearing centers of the brain.<sup>13</sup> Brain attention refers to a person's ability to attain, remember, understand, and apply information.<sup>13</sup> Heart rate (HR), heart rate variability (HRV), respiration rate (RR), peripheral body temperature, and superficial trapezius EMG activity were measured. Increases in HR, RR, and trapezius EMG activity are associated with elevated levels of central nervous system stress or increased GSR, whereas, HRV decreases with higher levels of stress.<sup>15</sup>

Neurocognitive and physical psychometric measures consisted of the Stroop test,<sup>16,17</sup> visual reaction,<sup>17,18</sup> a reaction time test,<sup>17</sup> musculoskeletal range of motion, strength, a functional movement assessment consisting of balance-mobility-gait tasks,<sup>11,12</sup> and force plate outputs for jump and landing mechanics on a ForceDecks (VALD Performance, Charlotte NC) force plates.<sup>19,20</sup> The Stroop test is a neuropsychological test used to assess the speed or ability to process cognitive interference, inhibition, and se-

lective attention capacity relative to simultaneous stimuli.<sup>16,17</sup> The visual reaction was measured using the Dynavision D2, (Cincinnati, OH) A\*-Proactive assessment which requires the individual to react and strike lights as they illuminate as quick as possible when presented in a random, computer-selected algorithm. In a similar fashion, the decision reaction time tests measured the response speed of the left and right hand and left-to-right brain activity precision prompted by visual stimuli.<sup>18</sup> The functional movement and force plate assessments were used to measure bilateral functional asymmetries and relative ground reaction force upon walking gait, balance, landing, and jumping activities. Specifically, the force plate offers insight to force acceleration/decelerations, reactions, and bilateral imbalances. Overall, each measure provides an initial marker for longitudinal progressions that offer insight to assist in monitoring changes in functional performance and left-to-right symmetries of the limbs and brain function. The data was analyzed using CLR Neurothenics, Inc neuroanalytics provided by Intheon Labs (San Diego, CA).

The initial qEEG assessment was performed twenty-four hours following injury while the athlete was being monitored and treated to manage the acute stage swelling and pain. Non-weight bearing/crutch ambulation, ice, compression, elevation, and linear mobility exercises were initiated to promote improvement in passive and active ROM with reductions in pain and swelling. The state of the acute injury limited the ability to perform extensive functional and physical assessments. Immediately following injury, the reduction in the motor neuron network demonstrates a potentially altered signal from the peripheral receptors.<sup>21</sup> Therefore, the initial tests used to monitor neurophysiological status using qEEG were the physiological regulatory measures, the Stroop test, decision reaction time, attention, workload, and SMR metrics. There was no pre-injury baseline.

One month post-surgical reconstruction, the athlete was progressing through a best-practice rehabilitation program previously reported to have sustainable, valid, and reliable techniques ideal for athletic populations and return-to-play progressions.<sup>11</sup> Throughout the rehabilitation protocol the athlete progressed with improvements noted in pain, swelling, ROM, function, and functional joint stability.

## OUTCOMES

Heart rate, heart rate variability, respiration, and brain attention levels yielded high-stress

Determinants in the acute stages of injury were associated with brain dysregulation, hemispheric asymmetries (Tables 2 and 3) and musculoskeletal functional asymmetries. Traditional objective measures of knee joint laxity, range of motion, swelling, strength, and patient-reported outcomes were collected throughout the rehabilitation progression and are outlined in Tables 4, 5, and 6. Central nervous system, brain performance, and musculoskeletal functional biomarkers were monitored longitudinally at three separate time points following anterior cruciate injury: twenty-four hours post ACL rupture, one month, and nine months

which was the time period for her return to competition following ACLR surgery. Brain and musculoskeletal dysfunction longitudinally reveal a neurophysiological acute compensation and recovering accommodation from time points one to three. In addition, biological responses to stress, neuroanalytics of brain workload, arousal, and attention all advanced to more commonly regulated function during the progression of the rehabilitation. The neurophysiological development following acute ACL rupture demonstrates significant dysfunction in asymmetrical functions both neurocognitively and physiologically.

## DISCUSSION

The original intent of this case was to investigate the innovative use of qEEG and neurophysiological metrics to monitor the longitudinal and simultaneous change in brain and central nervous systems activity while measuring musculoskeletal function during an anterior cruciate ligament repair rehabilitation. The data captured initial brain dysregulation and signs of accommodation that were simultaneously associated with muscular dysfunction over the nine-month period. Other authors have monitored only qEEG activity during isolated positional (kinesthetic) activity or only active ROM to demonstrate changes in brain wave activity.<sup>3,4,9</sup> This is the first report to examine the use of the CGX EEG headset to perform a qEEG to evaluate and demonstrate simultaneous changes in both the central nervous system and the peripheral musculoskeletal system throughout an ACLR rehabilitation sequence.

The initial data regarding hemispheric asymmetries (Table 3) indicates the athlete's brain was in a dysregulated state at initial injury and one-month following injury, but not at nine months following injury. A difference in brain activity, as little as 10-15% between each hemisphere, appears to create a dysregulated state.<sup>10</sup> The initially slower right-handed reaction times indicate potential left hemisphere disruption as a result of having to accommodate for the injury to the right knee.<sup>21</sup> In comparison, the left-hand reaction time was not clinically significant between time points one and two; however, it did demonstrate noted clinical improvements at nine months. The right hand was vastly different for all time points revealing a potential lag or inhibition in motor planning.<sup>21</sup> The Dynavision D2 assessments from one month and nine months post-surgery revealed no significant change in performance which may indicate visual reaction time and accommodation following injury occur within the first month of rehabilitation and recovery. Recent literature has revealed both accuracy and reaction times to be impaired following ACLR.<sup>21</sup> Conversely, this case data revealed slower reaction times following injury but no lag in accuracy. The results of the Stroop test remained constant throughout the rehabilitation program while the speed of responses significantly improved between each time point (Table 2).

The dysregulation noted in this case is likely multifactorial and associated with a compromised motor planning sequence. Recent literature has identified a potential inhibition response due to an increased strain on brain con-



**Table 1. Attention, Workload, Sensory Motor Asymmetry, Heart Rate, Heart Rate Variability, Respiration Means and Standard Error of Measure.**

Dates/ Tasks	Attention # Mean SEM		Workload* Mean SEM		SMR Asymmetry^ Mean SEM		Heart Rate Mean SEM		HRV Mean SEM		Respiration Mean SEM	
1/25/21/ FMS, RT	1.39	.007	.776	.003	.007	.000	77	.159	293	5.10	16	.049
2/23/21/ FMS, RT	1.17	.008	.752	.005	.001	.001	54	.379	787	15.6	14	.058
11/14/21 FMS, RT FD	1.02	.063	.731	.002	.012	.000	63	.464	564	25.3	17	.0119

FMS- Functional Movement Screen: functional gait and lower extremity landing tasks

RT- Reaction Time Task: used to assess speed and accuracy of decision making

T1= Time point of initial qEEG assessment (1/25/21)

T2= Time point of second qEEG assessment (2/23/21)

T3= Time point of third qEEG assessment (11/14/21)

**Table 2. Longitudinal Change for Dynavision, Stroop Test, Stroop Reaction Time and Decision Reaction Time.**

Assessment Time Points/Tools	T 1 (1/25/2021)	T 2 (2/23/2021)	T 3 (11/14/2021)
Dynavision (touch/min) AVE	NA	77	76
Stroop (ms)% Correct	97	95	97
Stroop Response time (ms)	772	654	552
Reaction Time- Left Hand (ms)	445	428	395
Reaction Time- Right Hand (ms)	498	411	337
Reaction Time- L/R Average (ms)	462	410	366

T1 to T2, T2 to T3, T1 to T3 indicates assessment times 1 = (1/25/2021), 2= (2/23/2021) and 3= (11/14/2021)

L/R= Left-to-Right hand reaction time average

\*Indicates no immediate deficit in reaction time following injury

**Table 3. Left to Right Hemisphere Symmetry, Percent Difference**

Date	Hemispheric Symmetry Left Right		Left-to-Right Hemispheric Differences	% Difference Left to Right hemisphere	Impression
1/25/2021	847	718	129	15%	Dysregulated
2/23/2021	622	683	61	10%	Dysregulated
11/14/2021	566	539	27	2%	Regulated

**Table 4. Knee arthrometry anterior tibial translation measures (mm) of involved and uninvolved knees by Newtons(N) of anterior force and time point from date of surgery.**

Knee Arthrometry (Knee Lax 3)				
Time	24 hours (initial)	1 month	6 months	9 Months
Anterior Deficit 66(N)	-0.95mm	0.17mm	0.14mm	0.24mm
Anterior Deficit 88(N)	-0.94mm	0.01mm	0.29mm	0.23mm
Anterior Deficit 132 (N)	-1.10mm	--	0.13mm	1.35mm

\*Anterior tibial translation was measured with Knee Lax 3 device.

\*(N)- Newtons of Anterior Force.

nectivity commonly associated with ACLR patients.<sup>21</sup> The qEEG along with the neurophysiological measurements provides a clearer understanding of how the neural mapping of the dysregulated brain state and neurocognitive function are impacted during ACLR recovery. Bruns et al.,

reported hemispheric decoupling can be altered based on a task.<sup>10</sup> Thought to be the result of lower corticospinal excitability in ACLR patients, lags in neurocognitive reaction time following injury appears to create a widespread cortical inhibition contributing to poor neural connectivity and

**Table 5. Knee Range of Motion, and bilateral Symmetry Assessments for Swelling Circumference**

Time	24 hours (initial)	1 month	6 months	9 months
Knee Passive ROM	Left: 5/0/145	Left: 5/0/145	Left: 4/0/145	Left: 5/0/145
	Right: 0/3/75	Right: 0/1/110	Right: 4/0/140	Right: 5/0/140
L/R ROM % Difference	48	24	3	5
Knee Swelling Circumference Deficit (cm)	Superior Patella: 0.5	Superior Patella: 0.3	Superior Patella: 0.0	Superior Patella: 0.0
	Mid/Inferior Patella: 3.6/1.5	Mid/Inferior Patella: 2.2/0.7	Mid/Inferior Patella: 0.2/0.1	Mid/Inferior Patella: 0.1/0.0
ACL-RSI	--	20%	85%	96.6%

Knee Passive Rom: Goniometry range of motion in degrees

L/R ROM % Difference: Percentile difference in range of motion left to right limb compared

Knee Joint Swelling -Circumference: capsular swelling of the left to right limb compared

ACL-RSI: Anterior Cruciate Ligament Return to Sport After Injury scale – designed to measure an athlete's psychological readiness to return to sport after ACL injury

**Table 6. Biodex Limb Symmetry Index for Isometric and Isokinetic Percentile Peak Torque of Uninvolved to Involved Limb**

Time		3 months	9 Month
Isometric 60°/s	Knee Extension	96%	--
	Knee Flexion	29%	
Isokinetic 180 °/s	Knee Extension	--	88%
	Knee Flexion		95%

\*Biodex Isokinetic Tests Measured in Degrees Per Second Peak Torque LSI%

peripheral motor response time. Reaction time and motor response play a vital role in athletic participation; thus, understanding the contributing factors of the CNS during ACLR recovery is critical to return to play progressions.

In the current case, attention and workload metrics were elevated beyond normal levels immediately following injury and progressively decreased over time regardless of physical or visual tasks. The workload metric was notably different initially, likely due to the CNS accommodating following the injury.<sup>4,21,22</sup> As a result, the initial workload values were elevated and trended higher with physical demands of jump landing, but not for the simple functional movements. The immediate elevation in the attention and workload metrics is consistent with previous reports of injury decreasing brain connectivity and efficiency following injury.<sup>22</sup> The increased workload and attention are accommodation mechanics thought to stimulate alternative neuronal activity directed on returning peripheral limb function.<sup>21</sup> In addition, when an individual is under high cognitive workload and the cognitive workload approaches the individual's cognitive capacity, human errors often occur.<sup>14</sup> Overall, hemisphere regulation was regained over an 8 month time frame, as indicated by a two-percent differential in brain hemisphere symmetries (see [Table 3](#)). It is important to note that the asymmetries that occurred in the central nervous system and brain regions of interest were associated with similar accommodations and asymmetries in musculoskeletal function (See [Tables 2 and 3](#)).

Re-establishing normal function to the pre-injury level is the primary goal of rehabilitation after ACLR. The rehabilitation program used in the current case consisted

of functional progressions normally seen in a traditional ACLR protocol. Return-to-play criteria rely on physical and clinical assessments related to range of motion, kinesthetic awareness, balance, and strength. The functional movement and force plate assessments used in the current study helped to guide the functional progressions necessary to advance movement patterns safely in preparation for return to sport. Throughout any rehabilitation process, left to right musculoskeletal asymmetries and functional capacities are used to evaluate exercise progressions. The current case reveals that monitoring the neurophysiological levels and brain electrophysiology activity in tandem with musculoskeletal function may be beneficial in maximizing return-to-play decisions post-injury or surgery.<sup>21,22</sup>

## CONCLUSION

The objective of this paper was to demonstrate alterations in cortical brain activity after suffering an ACL injury and undergoing ACLR with the goal of returning to competition. The lack of cortical wave continuity, hemispheric asymmetries, and hemispheric decoupling throughout the phases of rehabilitation seem to support the need to monitor neurophysiological adaptations during rehabilitation to assure neural continuity between the peripheral and central nervous system.

The athlete advanced through the clinical pathway based on the traditional somatic metrics. While this case report demonstrates the novel use of qEEG to monitor brain neurophysiological somatic “readiness” for return to play/ac-

tivity, more research is needed in order to support a causal relationship between these physical and neurological variables. Future studies with a larger cohort will be necessary to validate these conclusions. However, based on the data from this initial case study qEEG appears to have the potential to aid rehabilitation progressions by offering clinicians

a collective insight into the neurological and physiological functional capacity of an ACLR patient.

Submitted: January 07, 2023 CDT, Accepted: March 09, 2023 CDT



This is an open-access article distributed under the terms of the Creative Commons Attribution 4.0 International License (CCBY-NC-4.0). View this license's legal deed at <https://creativecommons.org/licenses/by-nc/4.0> and legal code at <https://creativecommons.org/licenses/by-nc/4.0/legalcode> for more information.

## REFERENCES

1. Machan T, Krupps K. The Neuroplastic Adaptation Trident Model: a suggested novel framework for ACL rehabilitation. *Int J Sports Phys Ther*. 2021;16(3):896-910. [doi:10.26603/001c.23679](https://doi.org/10.26603/001c.23679)
2. Hewett TE, Myer GD, Ford KR, et al. Biomechanical measures of neuromuscular control and valgus loading of the knee predict anterior cruciate ligament injury risk in female athletes: a prospective study. *Am J Sports Med*. 2005;33(4):492-501. [doi:10.1177/0363546504269591](https://doi.org/10.1177/0363546504269591)
3. Grooms DR, Page SJ, Onate JA. Brain activation for knee movement measured days before second anterior cruciate ligament injury: neuroimaging in musculoskeletal medicine. *J Ath Tr*. 2015;50(10):1005-1010. [doi:10.4085/1062-6050-50.1.0.02](https://doi.org/10.4085/1062-6050-50.1.0.02)
4. Simon JE, Millikan N, Yom J, Grooms DR. Neurocognitive challenged hops reduced functional performance relative to traditional hop testing. *Phys Ther Sport*. 2020;41:97-102. [doi:10.1016/j.ptsp.2019.12.002](https://doi.org/10.1016/j.ptsp.2019.12.002)
5. Diekfuss JA, Grooms DR, Bonnette S, et al. Real-time biofeedback integrated into neuromuscular training reduces high-risk knee biomechanics and increases functional brain connectivity: a preliminary longitudinal investigation. *Psychophysiology*. 2020;57(5):e13545. [doi:10.1111/psyp.13545](https://doi.org/10.1111/psyp.13545)
6. Thiebaut de Schotten M, Forkel SJ. The emergent properties of the connected brain. *Science*. 2022;378(6619):505-510. [doi:10.1126/science.abq2591](https://doi.org/10.1126/science.abq2591)
7. Kanda PAM, Anghinah R, Smidth MT, Silva JM. The clinical use of quantitative EEG in cognitive disorders. *Dement Neuropsychol*. 2009;3(3):195-203. [doi:10.1590/s1980-57642009dn30300004](https://doi.org/10.1590/s1980-57642009dn30300004)
8. Varghese JP, Merino DM, Beyer KB, McIlroy WE. Cortical control of anticipatory postural adjustments prior to stepping. *Neuroscience*. 2016;313:99-109. [doi:10.1016/j.neuroscience.2015.11.032](https://doi.org/10.1016/j.neuroscience.2015.11.032)
9. Needle AR, Lepley AS, Grooms DR. Central nervous system adaptation after ligamentous injury: a summary of theories, evidence, and clinical interpretation. *Sports Med*. 2017;47(7):1271-1288. [doi:10.1007/s40279-016-0666-y](https://doi.org/10.1007/s40279-016-0666-y)
10. Bruns A, Eckhorn R. Task-related coupling from high- to low-frequency signals among visual cortical areas in human subdural recordings. *Int J Psychophysiol*. 2004;51(2):97-116. [doi:10.1016/j.jipsyc.2003.07.001](https://doi.org/10.1016/j.jipsyc.2003.07.001)
11. Mangine RE, Noyes FR. Rehabilitation of the allograft reconstruction. *J Orthop Sports Phys Ther*. 1992;15(6):294-302. [doi:10.2519/jospt.1992.15.6.294](https://doi.org/10.2519/jospt.1992.15.6.294)
12. Myer GD, Paterno MV, Ford KR, Quatman CE, Hewett TE. Rehabilitation after anterior cruciate ligament reconstruction: criteria-based progression through the return-to-sport phase. *J Orthop Sports Phys Ther*. 2006;36(6):385-402. [doi:10.2519/jospt.2006.2222](https://doi.org/10.2519/jospt.2006.2222)
13. Mikicin M, Szczypinska M, Skwarek K. Neurofeedback needs support! effects of neurofeedback-EEG training in terms of the level of attention and arousal control in sports shooters. *Balt J Health Phys Act*. 2018;10(3):72-79. [doi:10.29359/bjhpa.10.3.08](https://doi.org/10.29359/bjhpa.10.3.08)
14. Kamzanova AT, Kustubayeva AM, Matthews G. Use of EEG workload indices for diagnostic monitoring of vigilance decrement. *Hum Factors*. 2014;56(6):1136-1149. [doi:10.1177/0018720814526617](https://doi.org/10.1177/0018720814526617)
15. Hoareau V, Godin C, Dutheil F, Trousselard M. The effect of stress management programs on physiological and psychological components of stress: the influence of baseline physiological state. *Appl Psychophysiol Biofeedback*. 2021;46(3):243-250. [doi:10.1007/s10484-021-09508-0](https://doi.org/10.1007/s10484-021-09508-0)
16. Lee C, Landre N, Sweet JJ. Performance validity on the Stroop Color and Word Test in a mixed forensic and patient sample. *Clin Neuropsychol*. 2019;33(8):1403-1419. [doi:10.1080/13854046.2019.1594385](https://doi.org/10.1080/13854046.2019.1594385)
17. Erdodi LA, Sagar S, Seke K, Zuccato BG, Schwartz ES, Roth RM. The Stroop test as a measure of performance validity in adults clinically referred for neuropsychological assessment. *Psychol Assess*. 2018;30(6):755-766. [doi:10.1037/pas0000525](https://doi.org/10.1037/pas0000525)
18. Clark JF, Ellis JK, Burns TM, Childress JM, Divine JG. Analysis of central and peripheral vision reaction times in patients with post-concussion visual dysfunction. *Clin J Sport Med*. 2017;27(5):457-461. [doi:10.1097/jsm.0000000000000381](https://doi.org/10.1097/jsm.0000000000000381)



19. Bakal DR, Morgan JJ, Lyons SM, Chan SK, Kraus EA, Shea KG. Analysis of limb kinetic asymmetry during a drop vertical jump in adolescents post anterior cruciate ligament reconstruction. *Clin Biomech (Bristol, Avon)*. 2022;100:105794. [doi:10.1016/j.clinbiomech.2022.105794](https://doi.org/10.1016/j.clinbiomech.2022.105794)

20. Mantashloo Z, Letafatkar A, Moradi M. Vertical ground reaction force and knee muscle activation asymmetries in patients with ACL reconstruction compared to healthy individuals. *Knee Surg Sports Traumatol Arthrosc*. 2020;28(6):2009-2014. [doi:10.1007/s00167-019-05743-5](https://doi.org/10.1007/s00167-019-05743-5)

21. Sherman DA, Baumeister J, Stock MS, Murray AM, Bazett-Jones DM, Norte GE. Inhibition of motor planning and response selection following ACL reconstruction. *Med Sci in Sports Exerc*. 2022;55(3):440-449. [doi:10.1249/mss.00000000000003072](https://doi.org/10.1249/mss.00000000000003072)

22. Giesche F, Engeroff T, Wilke J, Niederer D, Vogt L, Banzer W. Neurophysiological correlates of motor planning and movement initiation in ACL-reconstructed individuals: a case-control study. *BMJ Open*. 2018;8(9):e023048. [doi:10.1136/bmjopen-2018-023048](https://doi.org/10.1136/bmjopen-2018-023048)

## SUPPLEMENTARY MATERIALS

### Appendix A

Download: <https://ijspt.scholasticahq.com/article/73179-the-longitudinal-neurophysiological-adaptation-of-a-division-i-female-lacrosse-player-following-anterior-cruciate-rupture-and-repair-a-case-report/attachment/152346.docx>

---